

I 40 RUDIMENTI

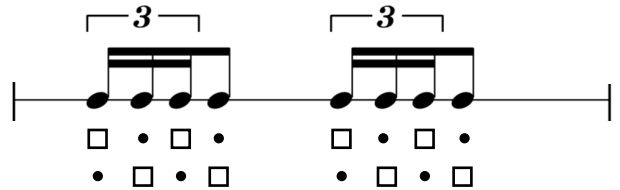
dal video: "VE LI SUONO TUTTI (e ve li spiego anche) | I 40 Rudimenti - Tutorial"

- MANO FORTE
- MANO DEBOLE
- > ACCENTO

01. SINGLE STROKE ROLL



02. SINGLE STROKE FOUR



03. SINGLE STROKE SEVEN



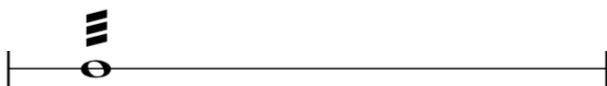
04. MULTIPLE BOUNCE ROLL



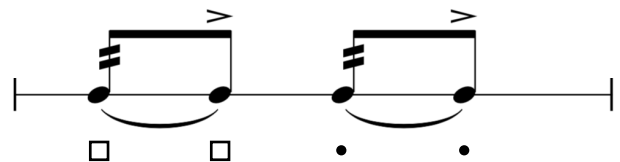
05. TRIPLE STROKE ROLL



06. DOUBLE STROKE ROLL



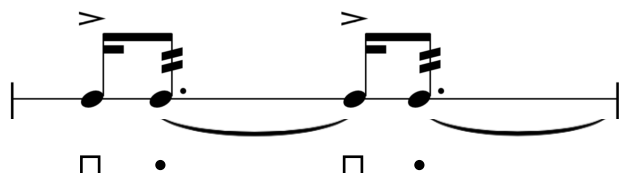
07. FIVE STROKE ROLL



08. SIX STROKE ROLL



09. SEVEN STROKE ROLL



10. NINE STROKE ROLL

□ . □ .

11. TEN STROKE ROLL

□ . □ . □ . □ .

12. ELEVEN STROKE ROLL

□ . □ . □ . □ .

13. THIRTEEN STROKE ROLL

□ . □ .

14. FIFTEEN STROKE ROLL

□ . □ .

15. SEVENTEEN STROKE ROLL

□ . □ .

16. SINGLE PARADIDDLE

□ . □ . □ .

17. DOUBLE PARADIDDLE

□ . □ . □ .

18. TRIPLE PARADIDDLE

□ . □ . □ .

19. PARADIDDLE-DIDDLE

□ . □ . □ .

20. FLAM

• □ □ •

21. FLAM ACCENT

• □ • □ □ • □ □ •

22. FLAM TAP

• □ □ □ • • □ □ □ • •

23. FLAMECUE

• □ • □ • □ • □

24. FLAM PARADIDDLE

• □ • □ □ □ • □ • □ • •

25. SINGLE FLAMMED MILL

• □ □ □ • □ □ • • □ • •

26. FLAM PARADIDDLE-DIDDLE

• □ • □ □ • • □ • □ □ • •

27. PA TA FLA FLA

• □ • □ □ □ • □ □ □ • □ □ □ • □ □ □ • □ □ □ •

28. SWISS ARMY TRIPLET

• □ □ □ • □ □ □ • □ □ □ • □ □ □ •

29. INVERTED FLAM TAP

• □ • □ • □ • □ • □ • □ • □ • □ • □ • □

30. FLAM DRAG

• □ • □ □ □ • □ □ □ • □ □ □ • □ □ □ •

31. DRAG

Musical notation for 31. DRAG. The staff shows two measures. The first measure has a quarter note followed by an eighth note with an accent (>). The second measure has an eighth note followed by a quarter note with an accent (>). Below the staff are two groups of drum symbols: the first group has a quarter note followed by two eighth notes, and the second group has two eighth notes followed by a quarter note.

32. SINGLE DRAG TAP

Musical notation for 32. SINGLE DRAG TAP. The staff shows two measures. The first measure has a quarter note followed by a half note with an accent (>). The second measure has a quarter note followed by a half note with an accent (>). Below the staff are two groups of drum symbols: the first group has a quarter note followed by two eighth notes, and the second group has a quarter note followed by two eighth notes.

33. DOUBLE DRAG TAP

Musical notation for 33. DOUBLE DRAG TAP. The staff shows two measures, each containing a triplet of eighth notes with an accent (>) over the first note. Below the staff are two groups of drum symbols: the first group has a quarter note followed by two eighth notes, and the second group has two eighth notes followed by a quarter note.

34. LESSON 25

Musical notation for 34. LESSON 25. The staff shows two measures. The first measure has a quarter note followed by a half note with an accent (>). The second measure has a quarter note followed by a half note with an accent (>). Below the staff are two groups of drum symbols: the first group has a quarter note followed by two eighth notes, and the second group has a quarter note followed by two eighth notes.

35. DRAGADIDDLE

Musical notation for 35. DRAGADIDDLE. The staff shows two measures. The first measure has a quarter note followed by a half note with an accent (>). The second measure has a quarter note followed by a half note with an accent (>). Below the staff are two groups of drum symbols: the first group has a quarter note followed by two eighth notes, and the second group has a quarter note followed by two eighth notes.

36. DRAG PARADIDDLE #1

Musical notation for 36. DRAG PARADIDDLE #1. The staff shows two measures. The first measure has a quarter note followed by a half note with an accent (>). The second measure has a quarter note followed by a half note with an accent (>). Below the staff are two groups of drum symbols: the first group has a quarter note followed by two eighth notes, and the second group has a quarter note followed by two eighth notes.

37. DRAG PARADIDDLE #2

Musical notation for 37. DRAG PARADIDDLE #2. The staff shows two measures. The first measure has a quarter note followed by a half note with an accent (>). The second measure has a quarter note followed by a half note with an accent (>). Below the staff are two groups of drum symbols: the first group has a quarter note followed by two eighth notes, and the second group has a quarter note followed by two eighth notes.

38. SINGLE RATAMECUE

Musical notation for 38. SINGLE RATAMECUE. The staff shows two measures. The first measure has a quarter note followed by a half note with an accent (>). The second measure has a quarter note followed by a half note with an accent (>). Below the staff are two groups of drum symbols: the first group has a quarter note followed by two eighth notes, and the second group has a quarter note followed by two eighth notes.

39. DOUBLE RATAMECUE

Musical notation for 39. DOUBLE RATAMECUE. The staff shows two measures, each containing a triplet of eighth notes with an accent (>) over the first note. Below the staff are two groups of drum symbols: the first group has a quarter note followed by two eighth notes, and the second group has two eighth notes followed by a quarter note.

40. TRIPLE RATAMECUE

Musical notation for 40. TRIPLE RATAMECUE. The staff shows two measures, each containing a triplet of eighth notes with an accent (>) over the first note. Below the staff are two groups of drum symbols: the first group has a quarter note followed by two eighth notes, and the second group has two eighth notes followed by a quarter note.